

Enforcer. OverNite Flea & Insect Trap

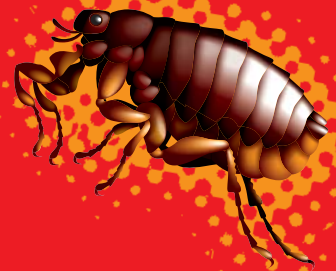
Enforcer.

OverNite. Flea & Insect Trap

Photocell
Night
Light

Turns on automatically
when the lights go off

- ▶ Attracts and traps flying & crawling insects while you sleep
- ▶ Contains no pesticides
- ▶ Use only 4 watts of electricity



Contains 1 Trap and 1 Glue Board

CAUTION: KEEP OUT OF REACH OF CHILDREN

Enforcer. OverNite Flea & Insect Trap

Enforcer. OverNite. Flea & Insect Trap

3-Step Flea Control Treatment:

1. TREAT YOUR PET. Apply ENFORCER's flea & tick control pet products regularly to control fleas on your pets.

2. TREAT YOUR HOME WITH ENFORCER FLEA SPRAY FOR HOMES, FLEA SPRAY FOR CARPETS & FURNITURE, & FLEA KILLER FOR CARPETS.

3. TREAT YOUR YARD with ENFORCER FLEA SPRAY FOR YARDS to control fleas & ticks in lawn and kennel areas.

Enforcer. OVER NITE® FLEA & INSECT TRAP

The **Over Nite® Flea & Insect Trap** is a night light that attracts insects. Insects are drawn to the photocell operated bulb where they become trapped by a sticky glue board that can be easily disposed of and replaced with a refill. Designed to plug into standard wall outlets, the trap hangs near the floor where it is easily reached by insects. The photocell light turns on automatically when the room becomes dark.

DIRECTIONS FOR USE

It is a violation of Federal law to use this product in a manner inconsistent with its labeling.

Contains no pesticides.

TO PREPARE TRAP FOR USE INSERT A GLUE BOARD INTO THE BACK OF THE TRAP:

1. Before removing the protective backing from the glue board, fold the top tabs away from you along the dotted lines. The tabs should now stand out at right angles from the card.
2. Pulling from the bottom, remove the protective backing in a continuous motion to reveal the glue surface.
3. Insert the top tabs at the top of the trap.
4. Rotate the night light so that the plug faces out and plug it into the lower insert of a wall outlet.

When the glue board is correctly placed, there is a cutout around the light bulb and the glue surface is facing out toward the grid on the front of the trap.

Do not allow the glue board to come in contact with the bulb.

REFILLS: Insert trap refills as needed. Pull unit from wall. Grasp glue board at the top edge near the light and pull away from the trap. Replace with refill as described above.

The trap will turn on automatically as the room becomes dark. Best results are achieved in a completely dark room. Place a trap in each room where insects may be present.

For best results, replace the refill every 30 days or as insects accumulate on the glue board.

WARNING: Risk of electrical shock: This product is not a toy. Not intended for use by children. For adult use only. Do not use with extension cords. For indoor use only. Plug only in exposed wall outlets where unit is ventilated and cannot contact bed coverings or other material that might present a fire hazard.

MADE IN U.S.A. OF DOMESTIC AND FOREIGN COMPONENTS.
CHIPONFT1F • Copy: 3-11 • EPA Est. 40849-GA-1
PRODUCT CODE: ONFT1
Zep Commercial Sales & Service, a unit of Zep Inc.
1310 Seaboard Ind. Blvd. • Atlanta, GA 30318
Questions? 1-888-805-4357, Mon. - Fri., 9am to 5pm EST.
www.enforcer.com

